

Bowers & Wilkins

Px7 S2  
Wireless  
Headphones

## Welcome to Bowers & Wilkins and Your Px7 S2 Headphones

Thank you for choosing Bowers & Wilkins. When John Bowers first established our company, he did so in the belief that imaginative design, innovative engineering and advanced technology were keys that could unlock the enjoyment of audio in the home. His belief is one that we continue to share and inspires every product we design, tailored for new audio experiences outside of the home.

The Bowers & Wilkins Px7 S2 are high performance over-ear headphones designed to deliver the highest quality mobile personal audio experience combined with the convenience of wireless operation and the serenity of noise-cancellation. This manual will tell you everything you need to know to get the most from your Px7 S2 headphones.

Your Px7 S2 can play music streamed wirelessly from your mobile phone, tablet or computer via Bluetooth, or conventionally connected by a jack cable to a suitable analogue headphone output. Px7 S2 can also play audio via a USB connection from a computer and can be used for wireless telephony.

Px7 S2 Real World Listening features include our latest innovations in Active Noise Cancellation, Ambient Pass-Through and enhanced Wear Sensing technologies. Our latest generation noise cancellation feature delivers an uncompromised listening experience. Ambient Pass-Through enables external sounds, such as conversation or safety announcements, to be heard clearly without any need to remove the headphones. The Wear Sensing feature enables Px7 S2 to respond naturally, pausing and resuming the music simply by lifting either earpiece on or off your ear. These features can be enabled and further customised via the Bowers & Wilkins **Music** app, available for free on iOS and Android devices.

Px7 S2 incorporates a rechargeable battery. When fully charged, depending on the degree of Bluetooth, Active Noise Cancellation and Ambient Pass-Through use, the battery pack can provide up to 30 hours of continuous wireless media streaming with noise cancellation enabled at average playback volume levels.

## 1. Px7 S2 Carton Contents

Px7 S2 over-ear wireless headphones  
 Storage case  
 USB-C to USB-C charging cable  
 USB-C to 3.5 mm audio cable  
 Document pack

## 2. Getting to Know Your Px7 S2

We recommend installing the Bowers & Wilkins **Music** app on your iOS or Android device. This allows you to configure your headphones in detail and provides helpful hints and tips to make the most of your new headphones.



bowerswilkins.com/downloadapp

### 2.1 Switching Headphones On and Off

Diagram 1 illustrates power switch functionality.

#### Switching On

The power switch is located on the right earpiece. Slide the power switch up to the middle position. An audible cue will be played and the LED indicator will light up.

#### Switching Off

Slide the power switch to the bottom position. An audible cue will be played and the headphones will power down when the LED indicator is no longer lit.

#### Bluetooth Pairing

Slide the power switch to the upper position and hold for 5 seconds to enter Bluetooth pairing mode. Refer to section 6 for further information on pairing your headphones to a Bluetooth source.

### 2.2 Headphone Controls

Diagram 2 illustrates the headphone controls. The buttons on the right earpiece are used for media playback and telephony.

#### Media Playback

Function	Action
Play or pause	Press the Multi-function button once.
Play next track	Press the Multi-function button twice in quick succession. <i>Note: functionality dependent on source device.</i>
Play previous track	Press the Multi-function button three times in quick succession. <i>Note: functionality dependent on source device.</i>
Increase Volume	Press the Volume + button.
Lower Volume	Press the Volume - button.

#### Telephony

Function	Action
Answer an incoming call	Press the Multi-function button once.
End a call	Press the Multi-function button once.
Decline an incoming call	Hold the Multi-function button for 2 seconds.
Switch between two calls	With two calls active, press the Multi-function button twice.
Merge two calls	With two calls active, hold the Multi-function button for 1 second.
Toggle mute	While on a call, press the Multi-function button three times.

## 2.3 Status Indicator

The status LED indicator is located on the right earpiece, the table below explains the illumination states:

Illumination	Operational state
White	Battery charge > 30%
Amber	Battery charge between 30% and 10%
Red	Battery charge < 10%
Red flashing	Battery charge insufficient for headphone operation
Blue flashing	Pairing mode enabled
Blue (2 sec solid)	Pairing successful
Blue flashing (calls)	Incoming call
Green flashing	Rapid charging
Green solid	Battery charge full, trickle charging

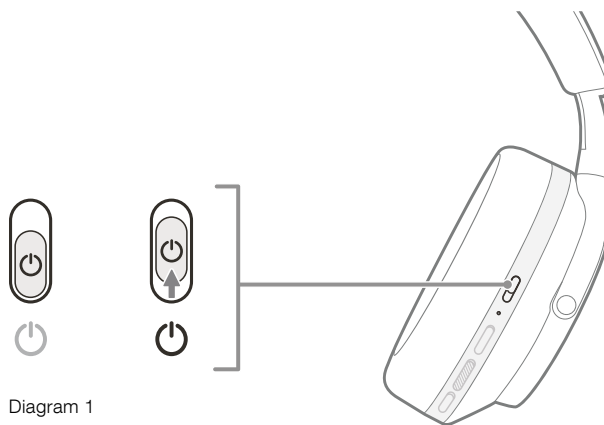


Diagram 1  
Power switch functionality

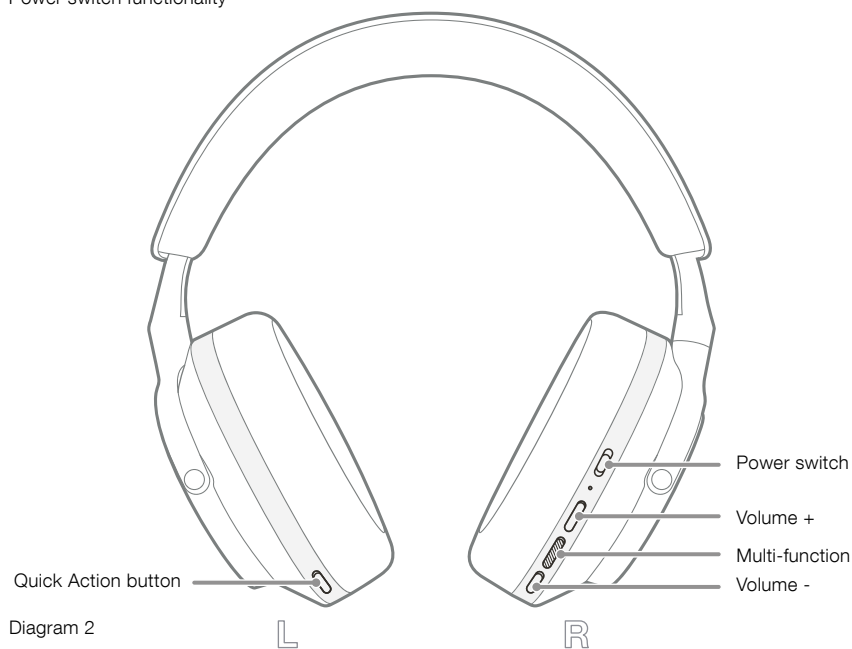


Diagram 2  
Headphone controls

### 3. Intelligent Features

#### 3.1 Environmental Controls

##### Active Noise Cancellation

Noise cancellation is a series of advanced technologies that aids in removing undesired noise from the surrounding environment. The Px7 S2 headphones use built-in microphones to pick up and cancel out ambient sound for a more comfortable listening experience.

*Note: Noise cancellation requires a good seal between the headphones and your head for optimal performance.*

##### Ambient Pass-Through

Px7 S2 also features an ambient “Pass-Through” mode, which allows in some external sound from the surrounding environment, allowing safety announcements or conversations to be heard without taking the headphones off.

By default, the Quick Action button on the left earpiece will cycle through the following modes, but the button can be customised from the Bowers & Wilkins **Music** app. See Diagram 2 for button location.

- Noise Cancelling On
- Pass-Through On
- Noise Cancelling and Pass-Through Off

#### 3.2 Voice Assistance

Your connected device’s voice assistant can be assigned to the Quick Action button on the left earpiece from the Bowers & Wilkins **Music** app. See Diagram 2 for button locations and section 8.2 on using the Bowers & Wilkins **Music** app.

#### 3.3 Wear Sensors

##### Power Saving

Px7 S2 incorporates our latest enhanced wear detection sensors in both earpieces (see Diagram 3), enabling intelligent battery conservation by pausing media playback and entering low power standby mode when removed from the head. When worn again, Px7 S2 automatically wakes and connects to the last connected Bluetooth device.

##### Playback Control

During media playback, Px7 S2 will automatically pause when either earpiece is lifted from the ear. If playback has been paused, placing the earpiece back on the ear will resume playback.

The standby timer and wear sensor features can be adjusted from the Bowers & Wilkins **Music** app.

*Note: Take care when wearing your headphones; hair or accessories trapped between your ears and the earpieces, or wearing glasses that distort the profile of your ears, may interfere with the performance of the wear sensors.*

### 4. Battery Charging and Power Saving

Your Px7 S2 comes with the battery partially charged and may be used immediately. For best practice we recommend you fully charge the headphones before first use. Please allow up to 2 hours to fully charge. The headphones can be used while charging.

To charge:

1. Use the supplied USB-C cable and connect one end to a wall charger or powered computer port.
2. Connect the other end of the cable to the USB-C socket on the headphone’s right earpiece.

*Note: During charging, the headphone indicator will flash green. When fully charged, the indicator will remain illuminated. See section 2.3 for status indicator details.*

### 5. Wearing Your Headphones

Wearing your headphones correctly will help ensure the best possible experience. See Diagram 5.

1. Identify the left and right earpieces by finding the identification legends located on the interior of each earpiece.
2. Wear the headphones accordingly with the headband adjusted so that they rest comfortably on your head.

*Note: Wearing glasses that distort the profile of your ears may interfere with headphone performance. Similarly, hair trapped between your ears and the headphone earpieces may interfere with the wear sensor performance.*

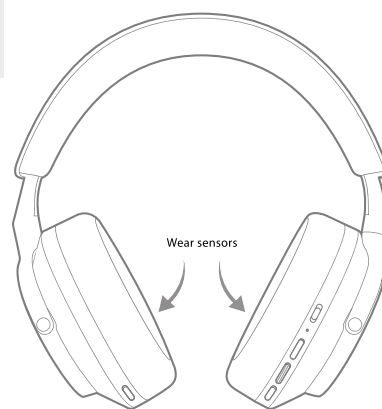


Diagram 3  
Wear sensor location

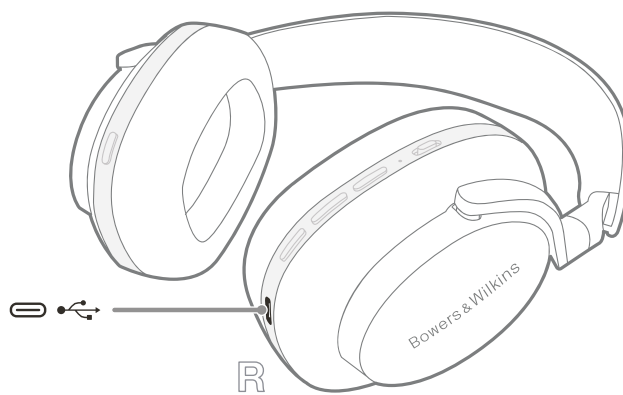


Diagram 4  
USB-C cable connection

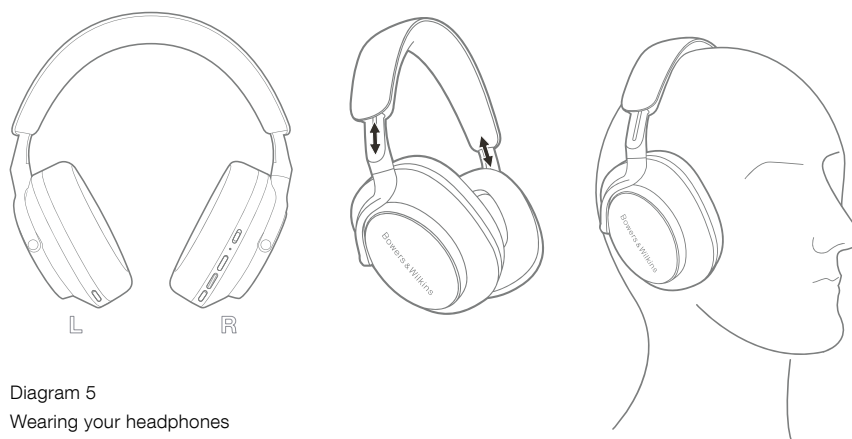


Diagram 5  
Wearing your headphones

## 6. Bluetooth Connection

### 6.1 Pairing

Your Px7 S2 headphones are designed to stream media wirelessly from Bluetooth audio devices, such as smartphones, tablets or personal computers. To do so, the headphones and source audio device must first be paired.

#### 6.1.1 Pairing iOS System with Bowers & Wilkins Music App Installed

We recommend adding your headphones to the Bowers & Wilkins **Music** app. This allows you to configure your headphones in detail and provides helpful hints and tips to make the most of your new headphones. Please refer to section 8 for details on installing and using your headphones with the Bowers & Wilkins **Music** app.

During the process of connecting your headphones to the app for the first time, you will also be prompted to pair the headphones as an audio accessory. Tap on the confirmation popup to complete the pairing process.

#### 6.1.2 Pairing Android Devices Supporting Google Fast Pair Service (GFPS)

*Note: Compatible with Android devices running Marshmallow 6.0+.*

To add your headphones:

1. Switch on your headphones and place them no further than 10 cm (4 inches) away from your Android device (with Bluetooth enabled).
2. The first time you switch on your headphones, Bluetooth pairing mode will be enabled, the indicator will flash blue. If pairing mode is not enabled, please slide and hold the power switch to the upper (Bluetooth icon) position for 5 seconds, let go when the indicator blinks blue and an audible cue is heard.
3. A GFPS (Google Fast Pair Service) notification will pop up showing that your device has been detected and request to start the pairing process.
4. Press the **Connect** button to enable pairing; successful connection will be shown in popup.
5. Once paired, the popup will direct you to the Google Play store to install the Bowers & Wilkins **Music** App.

### 6.1.3 Pairing All Other Devices

1. The first time you switch on your headphones, Bluetooth pairing mode will be enabled, the indicator will flash blue. If pairing mode is not enabled, please slide and hold the power switch to the upper (Bluetooth icon) position for 5 seconds, let go when the indicator blinks blue and an audible cue is heard.
2. Ensure the Bluetooth feature is enabled on the audio device, Px7 S2 will appear in the discovery list; select it to pair.
3. The indicator will flash blue while pairing is in progress, this will change to solid blue and an audible cue will play when pairing is successful.

Your headphones will remember up to eight paired Bluetooth devices. Repeat the above steps to pair more devices.

*Note: Your headphones will automatically exit Bluetooth pairing mode if no device is paired within 5 minutes. If pairing fails, the indicator will rapidly flash blue; please try pairing again.*

## 6.2 Multiple Bluetooth Connections

Px7 S2 can be paired with up to two devices simultaneously but note that you can only play audio or take calls from one device at a time.

To switch between two devices:

1. Pause audio on the first device, or use the Px7 S2 Multi-function button.
2. Play audio from the second device and the headphone will automatically switch over.

When streaming audio, receiving a call on the second device will automatically pause playback on the first device and the call will be routed to your headphones.

You can manage connections in further detail using the Bowers & Wilkins **Music** app.

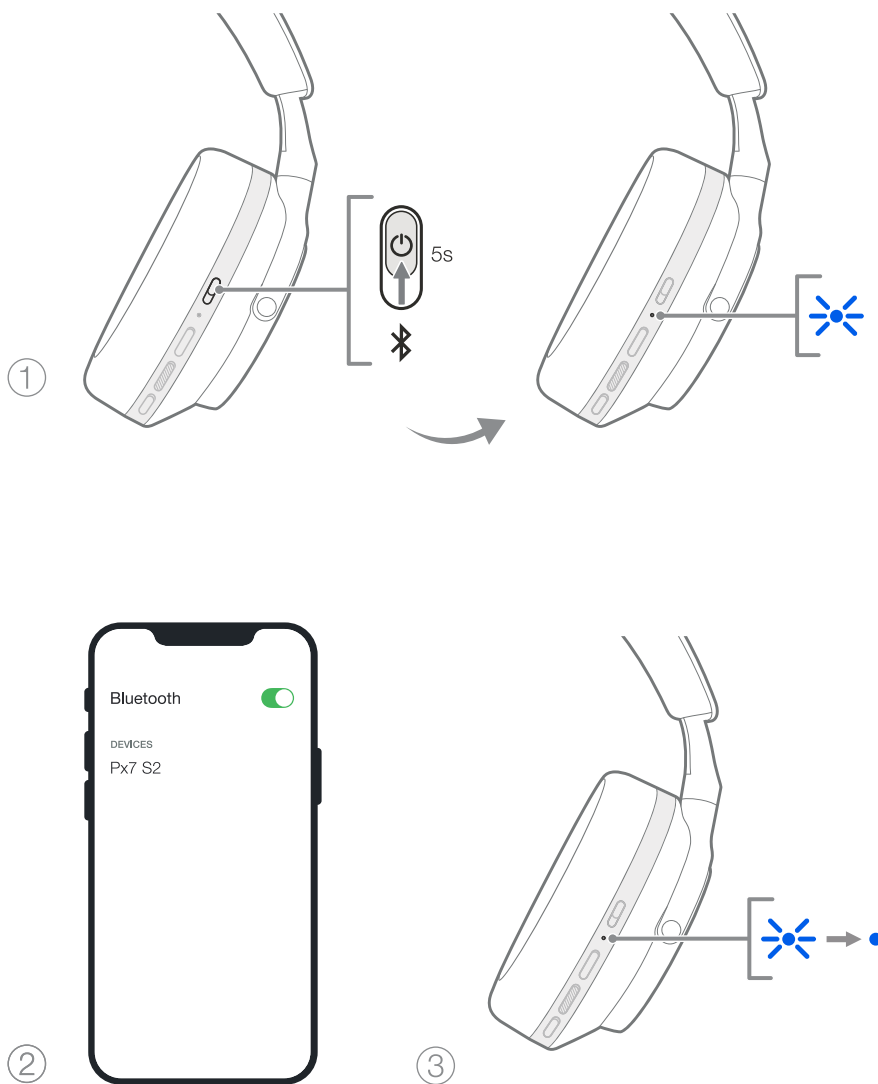


Diagram 6  
Bluetooth pairing

## 7. Auxiliary Connection

In addition to Bluetooth, your Px7 S2 can also connect to audio sources using the supplied 3.5 mm audio or USB cables.

### 7.1 Connecting with the 3.5 mm Audio Cable

The 3.5 mm audio cable enables your Px7 S2 to be used with a device supporting an analogue output, such as a conventional headphone socket on aeroplanes, smartphones or a traditional hi-fi system.

1. Insert the supplied USB-C to 3.5 mm audio cable into the headphone's USB-C socket on the right earpiece.
2. Insert the other end into the appropriate socket on your device.
3. Your Px7 S2 will automatically disconnect from any Bluetooth devices.

*Note: Your headphones must have sufficient charge and be switched on to play audio from an analogue source device. The volume and play/pause buttons will not function when you are using the 3.5 mm interface.*

### 7.2 Connecting with the USB Cable

The USB connection enables your Px7 S2 to function as a USB sound output device when connected to a capable computer.

1. Insert one end of the supplied USB-C to USB-C cable into the Px7 S2 USB-C socket on the right earpiece.
2. Insert the other end into the appropriate socket on your computer.
3. Px7 S2 will automatically disconnect from any Bluetooth devices.
4. Find and select your headphones from the computer's audio output control panel.

*Note: The headphone battery will also charge when connected to a capable USB port.*

## 8. Bowers & Wilkins Music App

The Bowers & Wilkins **Music** app is available for free on iOS and Android devices and provides extended setup and adjustments to features such as Active Noise Cancellation, Ambient Pass-Through and EQ settings. The app also provides further functions such as device naming, connection management and headphone software updates.



[bowerswilkins.com/downloadapp](https://bowerswilkins.com/downloadapp)

### 8.1 Connecting Your Headphones to the App

To set up your headphones in the app:

1. From your Android or iOS device, download and install the Bowers & Wilkins **Music** app.

2. Ensure your headphones are switched on.
3. Launch the app, then read and follow the instructions pertaining to app notification and permissions.
4. The app should detect your headphones automatically and invite you to set up your headphones; follow the in-app instructions to complete the setup process.
5. If your headphones are not detected automatically, navigate to the Settings page (⚙️ icon), tap **App product** and follow the in-app instructions.

### 8.2 Controlling Your Headphones

Commonly used features of your headphones are accessible directly on the app homepage:

- Battery status
- Environmental controls (Noise Cancellation, Pass-Through)
- Device connections (refer to the Connections section below for further details)

#### 8.2.1 Headphone Settings Page

Other settings can be adjusted from the Settings page. Tap the ⚙️ icon at the bottom of the screen to enter the Settings page, then select your headphones from the list.

#### Environmental Controls

Set the desired environmental control from the following options:

- Noise Cancelling On
- Pass-Through On
- Noise Cancelling and Pass-Through Off

#### EQ

Use the **Treble** and **Bass** sliders to customise the tone of your headphones.

#### Connections

The two most recently connected Bluetooth devices are shown in the **Connections** shortcut buttons. The buttons will appear grey if not currently connected. Tap the buttons to attempt reconnection. If only one device is shown, tap **ADD DEVICE** to place the headphones into Bluetooth pairing mode to pair them with a new device.

Tap the **CONNECTIONS** heading to view more detailed connection settings, including previously connected devices (Px7 S2 will remember up to eight devices).

Once in the Connections page, swipe a device left to delete a device from the list. Swipe a device right to make it the preferred device to connect to when the headphones are switched on.

Toggle **Auto-connect to last device** to prompt the headphones to connect to the previously connected device when they are switched on.

Tap **PAIR A NEW DEVICE** to place the headphones into Bluetooth pairing mode and pair them with a new device.

#### Quick Action Button

The left earpiece of your headphones features a button that provides quick access to commonly used functions. Customise the function of this button from the app.

- Environmental Controls – each press of the Quick Action Button cycles through:
  - Noise Cancelling On
  - Pass-Through On
  - Noise Cancelling and Pass-Through Off
- Voice Assistant – press the Quick Action Button to activate your device's voice assistant.



Diagram 7

Connecting the 3.5 mm audio cable

## Device Management

Toggle **Auto standby** on to place the headphones into a power-saving state after 15 minutes of inactivity.

Toggle **Wear sensor** on to enable intelligent playback control; lift an earpiece or remove your headphones to pause playback. Place them back on your ears to resume playback.

### Rename product

Tap **Rename product** to choose a new Bluetooth name for your headphones. Note that devices already paired with the headphones may still reference the previous name.

## 8.3 Headphone Software Updates

Bowers & Wilkins will occasionally make available software updates that refine and optimise the performance of your headphones or add new features. The Bowers & Wilkins **Music** app will notify you when a software update is available. Tap on the notification and then follow the in-app instructions.

## 9. Power Cycle and Reset

**The reboot/reset process may generate noise in the headphones – do not wear during this process.**

### 9.1 Power Cycle

To reboot your Px7 S2, remove the headphones from your head and remove any cables from the headphones. Simultaneously hold the Volume + and Volume - buttons for 10 seconds until the indicator LED extinguishes. Release the buttons when the indicator lights up again. Rebooting your headphones will not reset their internal settings or clear the paired device history.

### 9.2 Factory Reset

You can clear the paired device history and restore all settings to their factory defaults. Remove the headphones from your head and remove any cables from the headphones. With Px7 S2 powered on, simultaneously hold the Volume +, Volume - and left earpiece Quick Action button for 10 seconds until the indicator LED extinguishes. Release the buttons when the indicator lights up again; the headphones will be ready to pair to a device. Alternatively, you can perform a factory reset from the headphone's settings page of the Bowers & Wilkins **Music** app.

## 10. Care & Maintenance

### 10.1 Storing Your Headphones

Taking care of your Px7 S2 will ensure they continue to deliver the best performance and experience.

When you are not using your headphones, stow them in the included storage pouch. It is recommended the headphones are first powered off.

1. Retract the headband on each side so they are in the smallest position.
2. With the buttons facing you, rotate the earpieces inwards so they lay flat.
3. Place the headphones into the storage case.

## 10.2 Cleaning Your Headphones

It is advised that you clean your headphones regularly. Your Px7 S2 can be cleaned by a soft, damp microfiber cloth, gently wipe or dab clean.

The fabric on Px7 S2 has been specially coated with moisture and stain repellent. If dirt, stain or fibre residue accumulate on the fabric surface, please clean as instructed above.

- Do NOT aggressively rub or use an abrasive tool to clean, especially the fabric or leather.
- Do NOT use paper towels, napkins or tissue as they will leave residue.
- Do NOT use cleaning detergents, soapy water, polish or chemical cleaners.
- Ensure that no moisture get inside the earpieces, buttons and interface ports.

## 11. Support

Should you require further help or advice regarding your Px7 S2, please visit the Bowers & Wilkins support site: [www.bowerswilkins.com/support](http://www.bowerswilkins.com/support).

### 11.1 Environmental Information

This product complies with international directives, including but not limited to the Restriction of Hazardous Substances (RoHS) in electrical and electronic equipment, the Registration, Evaluation, Authorisation and restriction of Chemicals (REACH) and the disposal of Waste Electrical and Electronic Equipment (WEEE). Consult your local waste disposal authority for guidance on how properly to recycle or dispose of this product.

## Specifications

Wearing Style	Bluetooth Wireless Over-Ear Headphones
Technical Features	Active Noise Cancellation Ambient Pass-Through Wear-Detection Sensor Bluetooth® audio - Bluetooth 5.2 with aptX™ Adaptive USB-C charging & audio interface
Bluetooth Codecs	aptX™ Adaptive aptX™ HD aptX™ AAC SBC
Bluetooth Profiles	A2DP AVRCP HFP HSP BLE GATT (Generic Attribute Profile)
Drive Units	2 x ø 40 mm dynamic full range bio cellulose driver
Microphones	4 x mics for ANC 2 x mics for telephony
Input Impedance	33 Ω
Distortion (THD)	<0.1% (1 kHz/10 mW)
Battery Type	Rechargeable Lithium Ion
Battery Life & Charging	30 hrs Bluetooth with ANC, 7 hrs with 15 min charge, 2 hrs for full charge
Inputs	Bluetooth, 3.5 mm stereo jack, USB-C audio
In Box Accessories	1.2 m USB-C to 3.5 mm stereo jack audio cable 1.2 m USB-C to USB-C cable Carrying case
Weight	307 grams without case